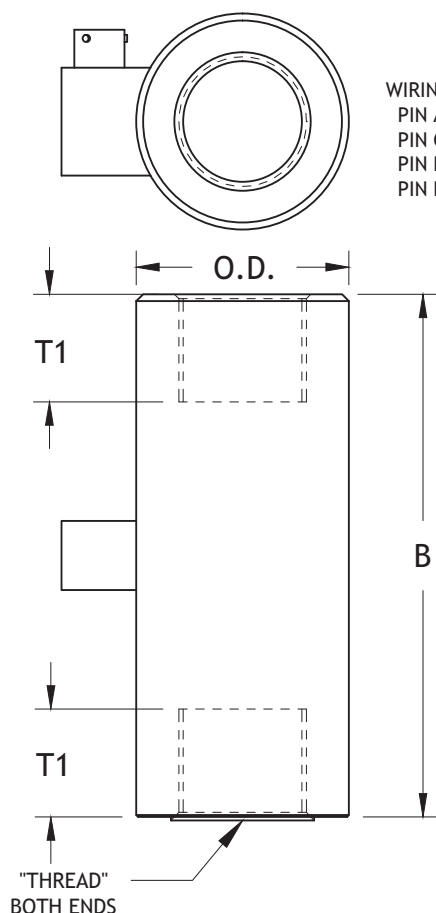


# Rod End Tension Load Cell

Model XLRF



WIRING CODE/Connector:  
 PIN A & B +Input  
 PIN C & D -Input  
 PIN E -Output  
 PIN F +Output



max.  
200,000  
lbs



## Measuring ranges

- 2,000 to 200,000 lbs



## Features

- Female/Female Threaded Connections
- Very High Capacities Available
- Rugged Design



## Options

- Built-In Amplifier
- Integral Cable
- Extended Compensated Temperature Range
- Bridge Resistance
- Tension/Compression
- Thread Size
- Connector Guard



## Drawing

- 99-3354-0000

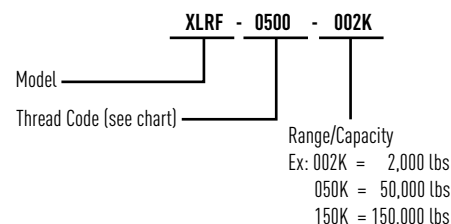
All dimensions are in inches, unless otherwise noted. Also available in metric units.

PERFORMANCE SPECIFICATIONS	
EXCITATION	10 VDC, 15 VDC max
OUTPUT	2.0 mV/V
BRIDGE RESISTANCE	350 Ohms
LINEARITY	±0.2% FSO (±0.15% FSO for 2K-50K lbs)
HYSTERESIS	±0.2% FSO (±0.15% FSO for 2K-50K lbs)
REPEATABILITY	±0.05% FSO
ZERO BALANCE	±1.0% FSO
OPERATING TEMP RANGE	-65 to +250°F (-54 to +121°C)
COMPENSATED TEMP RANGE	+60 to +160°F (+15 to +71°C)
THERMAL EFFECTS:	
on Zero	±0.005% FSO/°F
on Span	±0.005% Reading/°F
SAFE OVERLOAD	150% of Capacity
CONNECTOR	MS3102E-14S-6P (>50k) PTIH-10-6P (≤50K)
MATERIAL	Stainless Steel

Capacity (lbs)	OD	B
2,000 - 5,000	1.5	4.25
7,500 - 20,000	1.75 (2.5W/ 1 1/2-12 THD)	5.00 (7.00 W/ 1 1/2-12 THD)
30,000 - 50,000	2.5	7.00
75,000 - 100,000	4.5	13.50
150,000 - 200,000	5.5	18.00

## How to order

Note: not all combinations are possible, see chart



Thread	Thread Code	T1	Capacities for available given thread sizes													
			2,000	3,000	4,000	5,000	7,500	10,000	15,000	20,000	30,000	50,000	75,000	100,000	150,000	200,000
1/2-20 UNF	0500	.75	x	x	x	x										
3/4-16 UNF	0750	.95	x	x	x	x	x	x	x							
7/8-14 UNF	0875	.95					x	x	x	x						
1-14 UNF	1000	1.0					x	x	x	x						
1 1/2-12 UNF	1500	1.5					x	x	x	x	x	x				
2 1/2-12 UNF	2500	3.5											x	x		
3 1/2-8 UN	3500	4.5													x	x