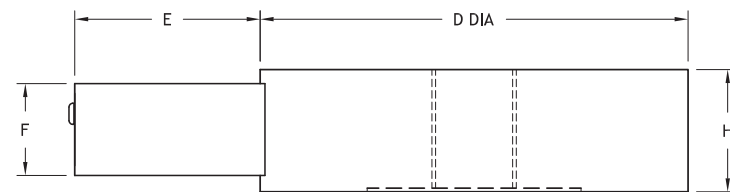
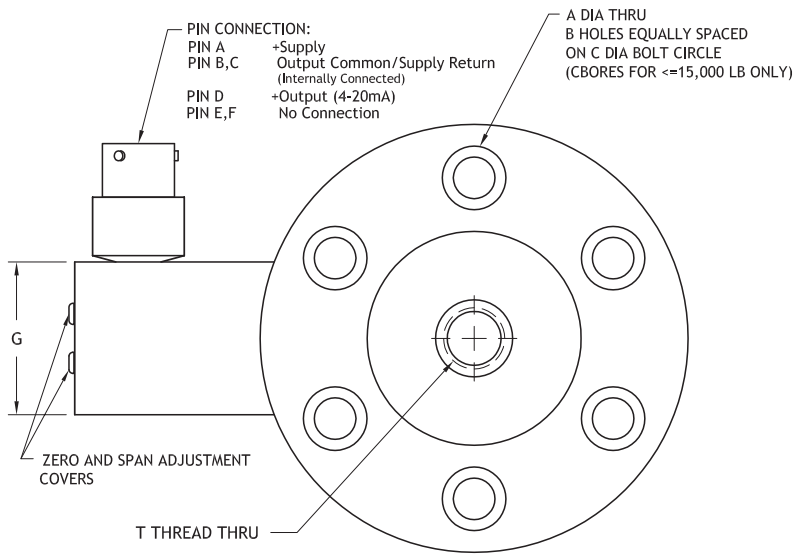


# Universal Pancake Load Cell, 4-20 mA 3-Wire

Model XLP58-I



max.  
50,000  
lbs



## Measuring ranges

- 5 to 50,000 lbs

## Features

- High Accuracy
- Tension/Compression
- 4-20 mA Output, 3-Wire
- Extremely Rugged Design
- Welded Stainless Construction
- Wide Range of Capacities

## Options

- Dual Bridge
- Integral Cable
- 4-20 mA Output, 2-Wire
- No Pots for Zero and Span Adjustment

## Drawing

- 99-3414-0000

All dimensions are in inches, unless otherwise noted. Also available in metric units.

PERFORMANCE SPECIFICATIONS (FSO is Full Scale Output)	
EXCITATION	16-32 VDC
OUTPUT	4-20 mA $\pm 5\%$ adjustable
LINEARITY	$\pm 0.1\%$ FSO
HYSTERESIS	$\pm 0.08\%$ FSO
REPEATABILITY	$\pm 0.03\%$ FSO
ZERO BALANCE	4 mA $\pm 10\%$ , -2% adjustable
OPERATING TEMP RANGE	0 to +185°F
COMPENSATED TEMP RANGE	+60 to +160°F
THERMAL EFFECTS	
on Zero	$\pm 0.005\%$ FSO/°F
on Span	$\pm 0.005\%$ Reading/°F
SAFE OVERLOAD	150% of Capacity
ULTIMATE OVERLOAD	300% of Capacity
MATERIAL	17-4 PH Stainless Steel
STANDARD CALIBRATION	Positive in Tension
CONNECTOR	
5,000 lbs & below	PTIH-10-6P or equal
above 5,000 lbs	MS3102E-14S-6P or equal

Capacity (lbs)	Ordering Example
5,000	XLP58-I-005K
7,500	XLP58-I-07K5
20,000	XLP58-I-020K

Ranges (lbs)	ØD	H	A	B	C	T	E	F	G
5 - 25	2.50	.80	.18	6	2.00	1/4-28UNF	2.2	.75	2.0
50 - 1,000	3.00	1.00	.28	6	2.25	3/8-24UNF	2.2	.75	2.0
2,000 - 5,000	3.50	1.00	.34	6	2.63	1/2-20UNF	2.2	.75	2.0
7,500 - 15,000	5.50	1.80	.40	8	4.50	1-14UNS	2.3	1.5	2.0
20,000 - 50,000	6.00	1.80	.53	8	4.88	1 1/2-12UNF	2.3	1.5	2.0