

Shear beam load cell

0...500 kg up to 0...10.000 kg

Model F3831

Applications

- Floor scales
- Weigh feeders
- Batching scales
- Industrial weighing systems

Special features

- Measurement ranges 0...500 kg up to 0...10.000 kg
- Shear beam load cell made of alloy steel/stainless steel
- High long-term stability
- High side load tolerance



Description

Shear beam load cells are designed for static and dynamic measurement tasks. They determine the shear forces in a wide scope of applications.

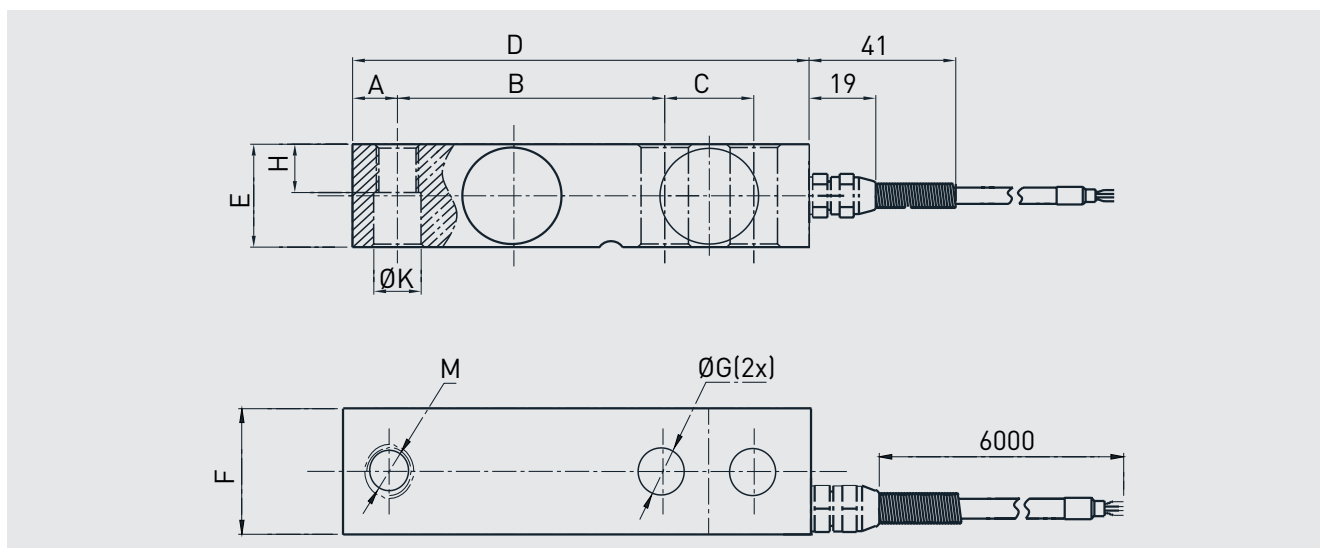
These shear beam load cells are used in industrial weighing and laboratory as well as in the process industry.

The load cells of the F3831 series are made of steel or stainless steel, which are particularly suitable for the application areas. The output signal is a mV/V signal.

Specifications in accordance with VDI/VDE/DKD 2638

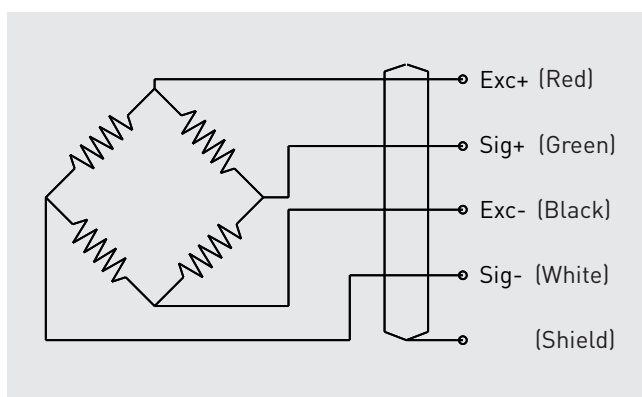
Model series	Symbol	Unit	F3831											
Measurement range														
Nominal load	F _{nom}	kg	500	750	1,000	1,500	2,000	2,500	3,000	5,000	7,500	10,000		
Accuracy and stability														
Relative linearity error	d _{lin}	x%F _{nom}	±0.03											
Relative reversibility	v	x%F _{nom}	±0.03											
Relative repeatability error in unchanged mounting position	b _{rg}	x%F _{nom}	±0.03											
Relative deviation of zero signal	d _{S, 0}	x%F _{nom}	±2											
Relative creep, 30 at min.		x%F _{nom}	±0.03											
Temperature effect on zero signal	TK ₀	%/10 °C	≤ ±0.025											
Temperature effect on characteristic value	TK _C	%/10 °C	≤ ±0.025											
Mechanical characteristics														
Force limit	F _L	x%F _{nom}	150											
Breaking force	F _B	x%F _{nom}	200											
Material			Steel, stainless steel											
Temperature ranges														
Rated temperature range	B _{T, nom}	°C	-10...60											
Operating temperature range	B _{T, G}	°C	-20...80											
Electrical characteristics														
Output signal (rated output)	C _{nom}	mV/V	2.0 ± 1 % (3.0 ± 1% optional)											
Input resistance	R _e	Ω	385 ± 10											
Output resistance	R _a	Ω	350 ± 5											
Insulation resistance	R _{is}	MΩ	± 5,000/DC 100 V											
Recommended excitation voltage		V	10											
Maximum excitation voltage		V	15											
Electrical connection			Cable Ø 5 x 6,000 mm											
General data														
Protection (acc. to EN/IEC 60529)			IP65 (< 500 kg) IP67 (≥ 500 kg)											
Weight		kg	1 (500 up to 2,500 kg) 1,9 (3.000 up to 5.000 kg) 4,5 (7.5000 up to 10.000 kg)											

Dimensions in mm



Nominal load in kg	Dimensions in mm									
	A	B	C	D	E	F	G	H	K	M
500, 750, 1,000, 1,500, 2,000, 2,500	12.7	76.2	25.4	130	31.8	31.8	13	15.7	13.5	M12 x 1.75
3,000, 5,000	19	95.3	38.1	171.5	38.1	38.1	20	26	20	M18 x 1.5
7,500, 10,000	25.3	124	50.8	225.5	50.8	50.8	27	25.4	26.2	M24 x 2

Pin assignment



Electrical connection

Excitation voltage (+)	Red
Excitation voltage (-)	Black
Signal (+)	Green
Signal (-)	White
Screen	Screen

© 09/2017 tecsis GmbH, all rights reserved.
The specifications given in this document represent the state of engineering at the time of publishing.
We reserve the right to make modifications to the specifications and materials.