

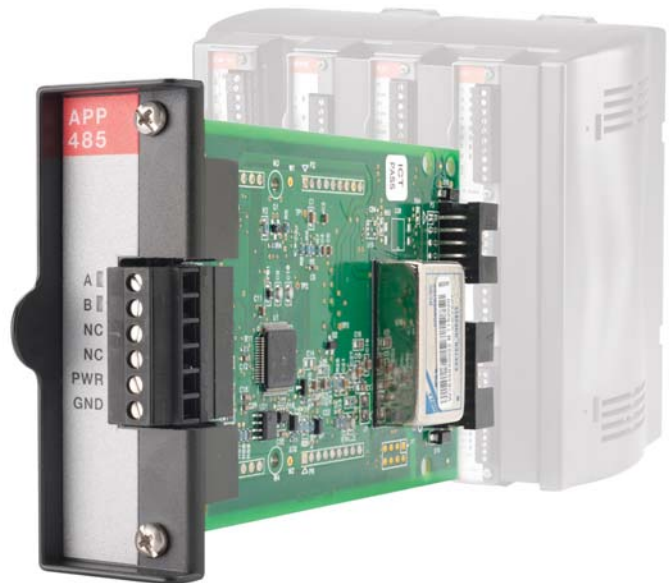
Modbus Express Module

The Modbus Express Module is an application module that delivers reliable configuration, minimal maintenance, and ease of operation. The module provides you with predefined Modbus-to-device mappings for a variety of devices. These mappings streamline and simplify configuration, and eliminate communication errors and device mis-configurations. You don't need to know register addresses; they are preset in the module, and you select devices using familiar tags.

The Modbus Express Module enables you to:

- Configure Modbus device communications, even without expert knowledge
- Select devices from a list of predefined configurations
- Include polling for additional user defined Modbus registers
- Eliminate incorrect configurations
- Communicate through a ROC800-Series RTU or FloBoss™ 107 Flow Manager, using pre-configured Modbus registers

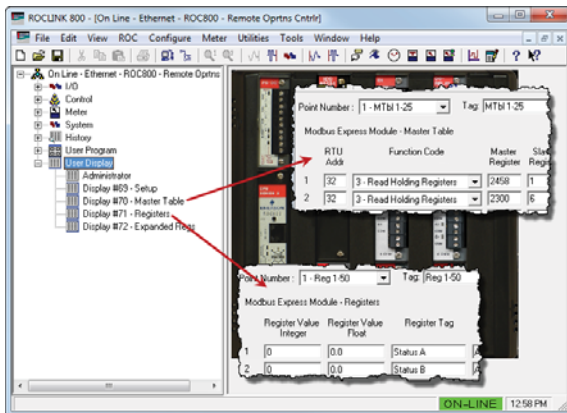
The Modbus Express Module delivers flexibility by plugging into any slot in the ROC800 and/or FloBoss 107. The module uses an innovative set of predefined device mappings to streamline the configuration process. Auto-populating the master table with a common set of registers reduces your effort to simply selecting devices from a menu. You can quickly add devices from a predefined list, and the module appends the master table entries and pertinent registers to the appropriate tables. Additionally, the module has an on-board RS-485 communication port for faster communications.



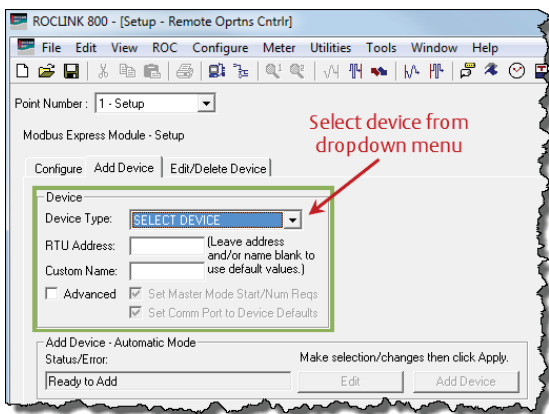
The Customer Benefit

The module:

- Plugs into any available slot on the ROC800 or FloBoss 107
- Uses an interface to enhance configuration
- Reads/writes published Modbus registers for selected devices
- Enables you to quickly add new devices
- Provides quick configuration with minimal maintenance
- Provides an extra RS-485 communications port
- Auto-populates the master table using a simple menu
- Auto-maps and auto-labels registers in the registers map
- Provides a simplified Modbus interface to various field devices
- Enables you to map extra Modbus registers
- Provides (through expanded registers) alarming, clipping, and overriding of a Modbus value



Configuration Tree



Select Device



Global Headquarters
Emerson Process Management
Remote Automation Solutions
6005 Rogerdale Road
Houston, TX, USA 77072
T +1 281 879 2699
F +1 281 988 4445

www.EmersonProcess.com/Remote



Europe
Emerson Process Management
Remote Automation Solutions
Unit 8, Waterfront Business Park
Dudley Road, Brierley Hill
Dudley, UK DY5 1LX
T +44 1384 487200
F +44 1384 487258



North America and Latin America
Emerson Process Management
Remote Automation Solutions
6005 Rogerdale Road
Houston, TX, USA 77072
T +1 281 879 2699
F +1 281 988 4445



Middle East and Africa
Emerson Process Management
Remote Automation Solutions
Emerson FZE
PO Box 17033
Jebel Ali Free Zone - South 2
Dubai, UAE
T +971 4 8118100
F +1 281 988 4445



Asia Pacific
Emerson Process Management
Remote Automation Solutions
1 Pandan Crescent
Singapore 128461
T +65 6777 8211
F +65 6777 0947

© 2013 Remote Automation Solutions, a business unit of Emerson Process Management. All rights reserved.

Emerson Process Management Ltd, Remote Automation Solutions (UK), is a wholly owned subsidiary of Emerson Electric Co. doing business as Remote Automation Solutions, a business unit of Emerson Process Management. FloBoss, ROCLINK, ControlWave, Helicoid, and OpenEnterprise are trademarks of Remote Automation Solutions. AMS, PlantWeb, and the PlantWeb logo are marks of Emerson Electric Co. The Emerson logo is a trademark and service mark of the Emerson Electric Co. All other marks are property of their respective owners.

The contents of this publication are presented for informational purposes only. While every effort has been made to ensure informational accuracy, they are not to be construed as warranties or guarantees, express or implied, regarding the products or services described herein or their use or applicability. Remote Automation Solutions reserves the right to modify or improve the designs or specifications of such products at any time without notice. All sales are governed by Remote Automation Solutions' terms and conditions which are available upon request. Remote Automation Solutions does not assume responsibility for the selection, use or maintenance of any product. Responsibility for proper selection, use and maintenance of any Remote Automation Solutions product remains solely with the purchaser and end-user.