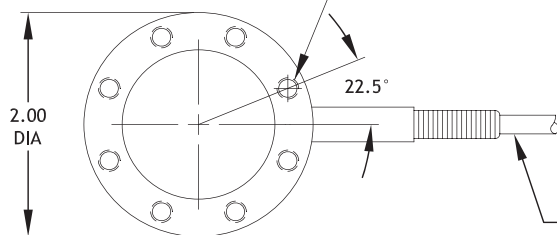


10-32 UNF X .40 DEEP, 8 MOUNTING HOLES  
EQUALLY SPACED ON A 1.687 DIA BASIC CIRCLE

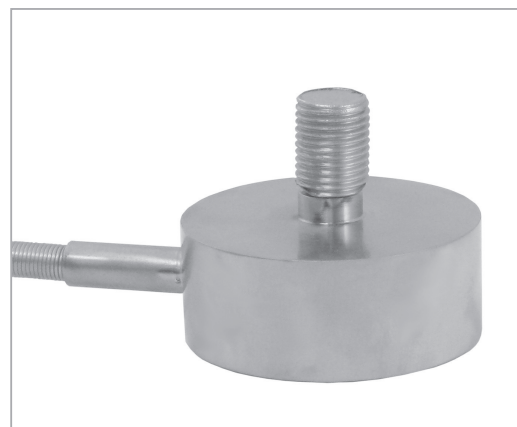


OPTIONAL TENSION PLATE AVAILABLE: ORDER DMi P/N: 99-2718-0200

10FT OF 4-CONDUCTOR CABLE  
WIRING CODE:  
White +Output  
Green -Output  
Black -Input  
Red +Input



max.  
10,000  
lbs



## Measuring ranges

- 25 to 10,000 lbs



## Features

- Tension/Compression
- Low Profile
- 0.15% Linearity
- Integral Mounting Stud
- Stainless Steel Construction



## Options

- Cable Length
- Extended Compensated Temperature Range
- Bridge Resistance
- Tension Plate
- In-line Amplifier



## Drawing

- 99-2764-0000

All dimensions are in inches, unless otherwise noted. Also available in metric units.

PERFORMANCE SPECIFICATIONS (FSO is Full Scale Output)	
EXCITATION	10 VDC, 15 VDC max
OUTPUT	2 mV/V
BRIDGE RESISTANCE	350 Ohms
LINEARITY	±0.15% FSO
HYSTERESIS	±0.10% FSO
REPEATABILITY	±0.05% FSO
ZERO BALANCE	±2% FSO
OPERATING TEMP RANGE	-50 to +225°F (-46 to +107°C)
COMPENSATED TEMP RANGE	+60 to +160°F (+15 to +71°C)
THERMAL EFFECTS on Zero	±0.005% FSO/°F
on Span	±0.005% Reading/°F
SAFE OVERLOAD	150% of Capacity
ULTIMATE OVERLOAD	300% of Capacity
CASING MATERIAL	Stainless Steel
STANDARD CALIBRATION	Positive in Tension

Capacity (lbs)	Ordering Example
25	XLUN294-0025
100	XLUN294-0100
1,000	XLUN294-001K
2,500	XLUN294-02K5
10,000	XLUN294-010K