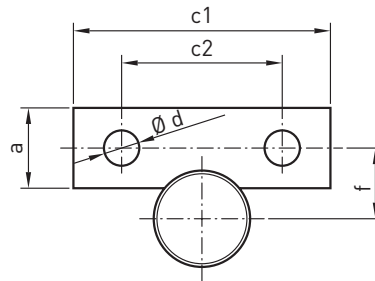
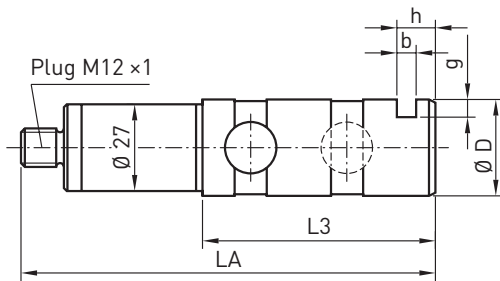
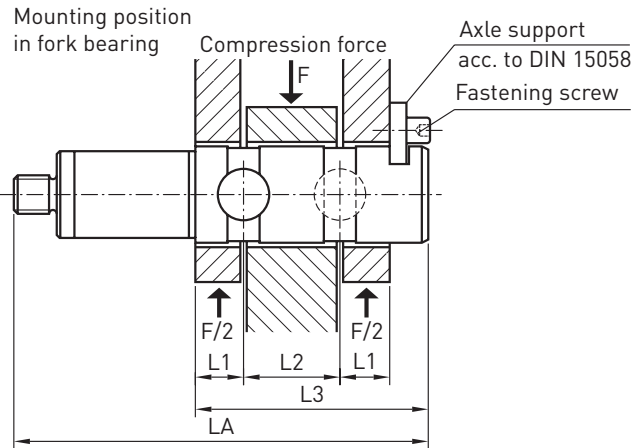


Load Pin

Model F5301

max.
200 kN

Force



All dimensions are in millimeters, unless otherwise noted. Also available in American units.



Measuring ranges

- 0-5 to 0-200 kN



Features

- Amplified Output
- High shock and vibration resistance
- For dynamic or static measurements



Options

- Keeper Plate
- Improved Accuracy
- Atex approval



Drawing

- DE940

PERFORMANCE SPECIFICATIONS (FSO is Full Scale Output)		Capacity (kN)	Ordering Example	ØD*	LA	L1	L2	L3	a	b	c1	c2	Ød	f	g	h
EXCITATION		5	F5301 1 350 002	20	105	10	20	50.5	20	5	60	36	9	16	4.0	10
for current output	10-30 VDC	10	F5301 1 410 001	25	115	12.5	25	60.5	20	5	60	36	9	18	4.5	10
for voltage output	14-30 VDC	20	F5301 1 420 002	30	125	15	30	72.5	25	6	80	50	11	22	5.5	12
OUTPUT		30	F5301 1 430 001	35	135	17.5	35	82.5	25	6	80	50	11	24	6	12
2-wire current	4-20 mA	50	F5301 1 450 011	40	150	22.5	40	97.5	25	6	80	50	11	26	6.5	12
3-wire voltage	0-10 VDC	100	F5301 1 510 011	50	165	23	50	112.5	30	8	100	70	13	33	7	16
LINEARITY	±2.0 or 1.0% FSO	200	F5301 1 520 011	70	213	35	70	160.5	40	10	140	100	17	45	10	20
HYSTERESIS	±0.20% FSO															
REPEATABILITY	±0.10% FSO															
CROSS SENSITIVITY (Signal with 100% load at 90°)	±5.0%															
OPERATING TEMP RANGE	-40 to +80°C															
COMPENSATED TEMP RANGE	-20 to +80°C															
THERMAL EFFECTS on Zero	0.02% FSO/10K															
on Span	0.02% FSO/10K															
SAFE OVERLOAD	150% of Capacity															
ULTIMATE OVERLOAD	300% of Capacity															
CASING MATERIAL	Stainless Steel															

Analog output	4 ... 20 mA (2-wire)				0...10 VDC (3-wire)			
	Electrical connection		Conductor marking		Electrical connection		Conductor marking	
Supply voltage (UB+)	1	Brown	1	Brown				
Supply voltage (0 V)	3	Blue	3	Blue				
Signal (+)	1	Brown	4	Black				
Signal (-)	3	Blue	3	Blue				
Screen	M12×1	Screen	M12×1	Screen				