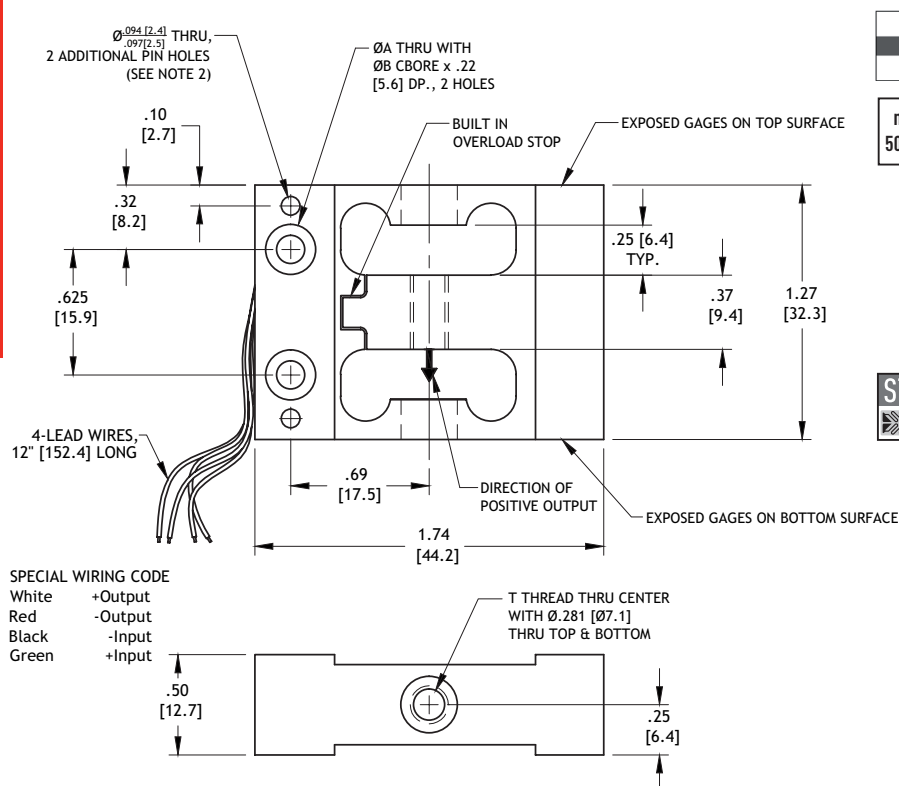
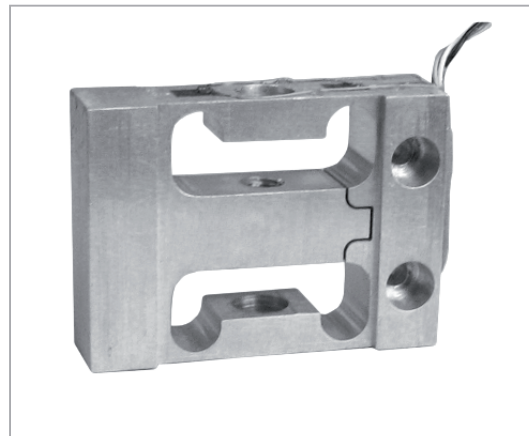


OEM Parallelogram

Model XLA

Force

max.
500 lbs**Measuring ranges**

- 0-2.2 to 0-500 lbs

**Features**

- Built-In Overload Protection
- Designed for OEM Applications
- Aluminum or Stainless Steel Construction

**Options**

- Bridge Resistance
- Inline Amplifier

**Drawing**

- 99-3408-0000

PERFORMANCE SPECIFICATIONS (FSO is Full Scale Output)

EXCITATION	10V AC-DC, 18V max
OUTPUT	2 mV/V Nominal
BRIDGE RESISTANCE	1,000 Ohms
LINEARITY	
100 lbs & below	±0.02% FSO
200 lbs & above	±0.06% FSO
HYSTERESIS	
100 lbs & below	±0.02% FSO
200 lbs & above	±0.06% FSO
REPEATABILITY	±0.02% FSO
ZERO BALANCE	±3.0% FSO
OPERATING TEMP RANGE	-60 to +200°F
COMPENSATED TEMP RANGE	+60 to +160°F
THERMAL EFFECTS	
on Zero	±0.005% FSO/°F
on Span	±0.005% Reading/°F
SAFE OVERLOAD	
100 lbs & below	250 lbs
200 lbs & above	200% of Capacity
MATERIAL	
100 lbs & below	Aluminum
200 lbs & above	17-4 PH Stainless Steel
WEIGHT	1 to 3 oz
STANDARD CALIBRATION	Positive in Compression

Capacity (lbs) Ordering Example

2.2	XLA-01KG
5	XLA-0005
10	XLA-0010
25	XLA-0025
50	XLA-0050
100	XLA-0100
200	XLA-0200
500	XLA-0500

Ranges (lbs)	T	A	B	Nominal deflection
0-2.2	10-32 UNF-2B	.14 [3.6]	.25 [6.4]	.002 [.05]
0-5	10-32 UNF-2B	.14 [3.6]	.25 [6.4]	.005 [.13]
0-10	10-32 UNF-2B	.14 [3.6]	.25 [6.4]	.005 [.13]
0-25	10-32 UNF-2B	.14 [3.6]	.25 [6.4]	.005 [.13]
0-50	10-32 UNF-2B	.14 [3.6]	.25 [6.4]	.005 [.13]
0-100	10-32 UNF-2B	.14 [3.6]	.25 [6.4]	.005 [.13]
0-200	10-32 UNF-2B	.14 [3.6]	.25 [6.4]	.005 [.13]
0-500	1/4-28 UNF-2B	.21 [5.3]	.34 [8.6]	.007 [.18]