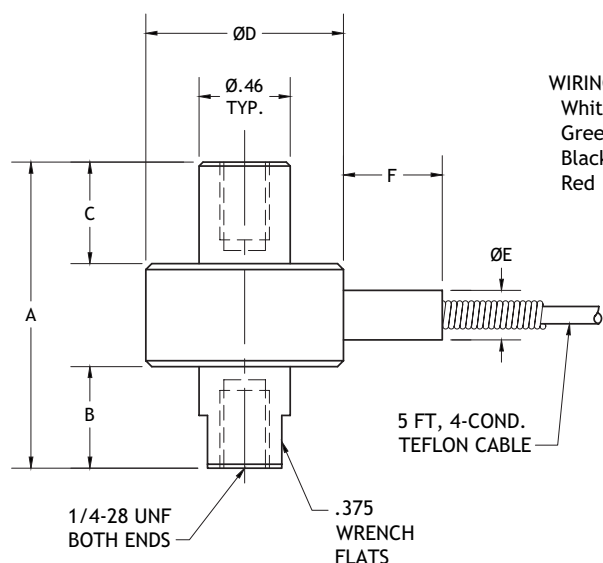


Tension/Compression Load cell

Model XLU65f

Force



max.
1,000
lbs

**Measuring ranges**

- 0-1,000 g to 0-1,000 lbs

**Features**

- Small Size
- Tension/Compression
- Welded Stainless Construction

**Options**

- Metric Threads
- Extended Compensated Temperature Range
- Inline Amplifier
- Underwater Cable
- Bridge Resistance
- Cable Length

**Drawing**

- 99-2824-0000

* Load cells 1kg - 10lbs have small balance board in cable

All dimensions are in inches, unless otherwise noted. Also available in metric units.

PERFORMANCE SPECIFICATIONS (FSO is Full Scale Output)

| | |
|-----------------------------------|--|
| EXCITATION | |
| 1,000g to 10lb | 5 VDC |
| 20lb to 1,000lb | 10 VDC |
| OUTPUT | |
| 1,000g | 1.5 mV/V Nominal |
| 5lb to 1,000lb | 2 mV/V |
| BRIDGE RESISTANCE | 350 Ohms (foil) |
| INSULATION RESISTANCE | 5,000 MOhms at 50 VDC |
| LINEARITY & HYSTERESIS | |
| 1,000g to 250lb | ±0.15% FSO, Combined |
| 500lb to 1,000lb | ±0.20% FSO, Combined |
| REPEATABILITY | |
| 1,000g | ±0.10% FSO |
| 5lb to 1,000lb | ±0.05% FSO |
| OPERATING TEMP RANGE | -65 to +250°F (-54 to +121°C) |
| COMPENSATED TEMP RANGE | +60 to +160°F (+15 to +71°C) |
| THERMAL EFFECTS | |
| on Zero | ±0.005% FSO/°F |
| on Span | ±0.005% Reading/°F |
| SAFE OVERLOAD | 150% of Capacity |
| CASING MATERIAL | Stainless Steel |
| STANDARD CALIBRATION | Positive in Tension Calibrated in Tension |

| Capacity (gram/lbs) | Ordering Example |
|---------------------|------------------|
| 1,000 grams | XLU65f-01KG |
| 10 lbs | XLU65f-0010 |
| 250 lbs | XLU65f-0250 |
| 1,000 lbs | XLU65f-001K |

| Ranges (gram/lbs) | ØD | A | B | C | ØE | F |
|---------------------------|------|------|-----|-----|-----|-----|
| 0-1,000 grams to 0-10 lbs | .75 | 1.75 | .72 | .60 | .19 | .31 |
| 0-25 to 0-100 lbs | 1.00 | 1.75 | .72 | .52 | .25 | .50 |
| 0-250 to 0-1,000 lbs | 1.00 | 2.00 | .75 | .75 | .25 | .50 |